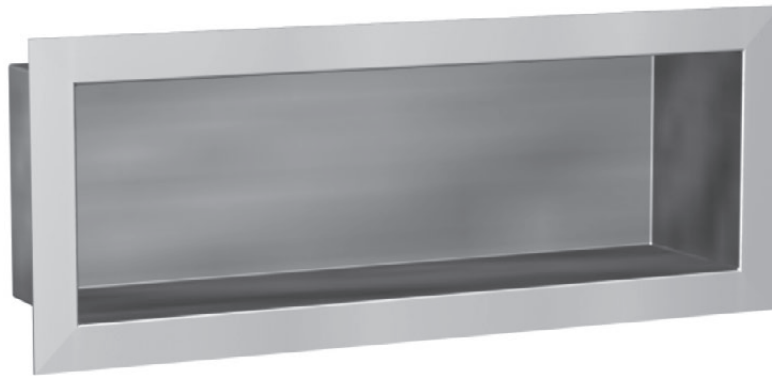


RECESSED SHELF



RBA8120-100 RECESSED SHELF

Materials & Features

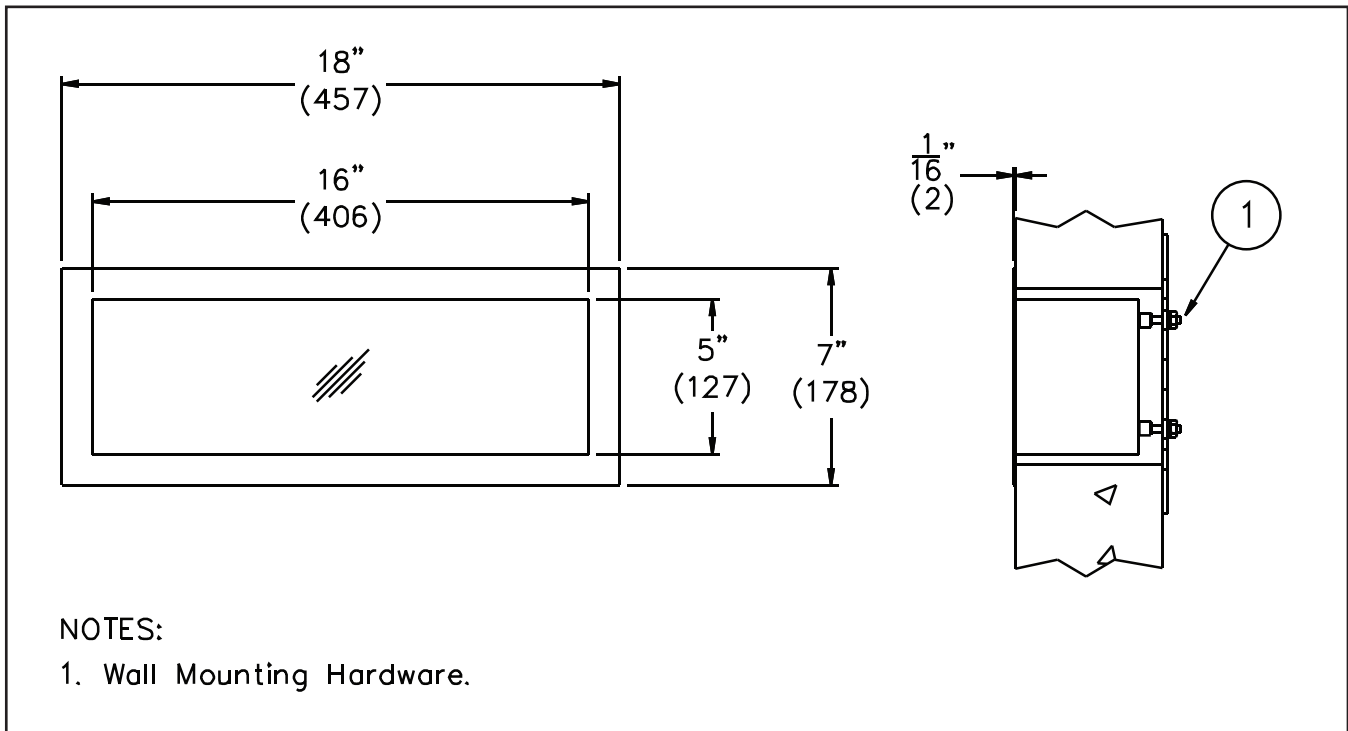
The RBA8120-100 Recessed Shelf is ideal for Correctional or Self-Harm use as it minimises the possibility of being used as a suicide device. Shelf is tall enough to hold any item normally used in conjunction with a washroom.

Recessed Shelf is fabricated from type 304 stainless steel and is of seamless welded construction.

Exposed welds are ground smooth. Exposed surfaces have a satin finish.

All models are furnished with heavy nuts welded on the back side. Shelf for wall thickness up to 107mm thick is furnished with a heavy steel back plate. The back plate has two 1/2" adjusting studs which, when turned clockwise, pull the rim snugly to the wall, permanently anchoring the assembly.

ROUGH WALL OPENING: 420mm W x 130mm D x 140mm H



Important: Installation instructions and current rough-in details should be furnished with each fixture. Do not rough in without certified dimensions. Dimensions are subject to manufacturer's tolerance of +/-10mm.

As improvements in the design and performance of RBA products are continuous, specifications may be subject to change without notice.
The illustrations and descriptions herein are applicable to production as of the date of this Technical Data Sheet. Revised 07/11 Printed in Australia
© 2011 by RBA Group TD/Model RBA8120-100/0711